



Cape Ann Bamboo Control Project

August 20th, 2025

Eric Walker

Natural Resource Specialist, Columbia Association

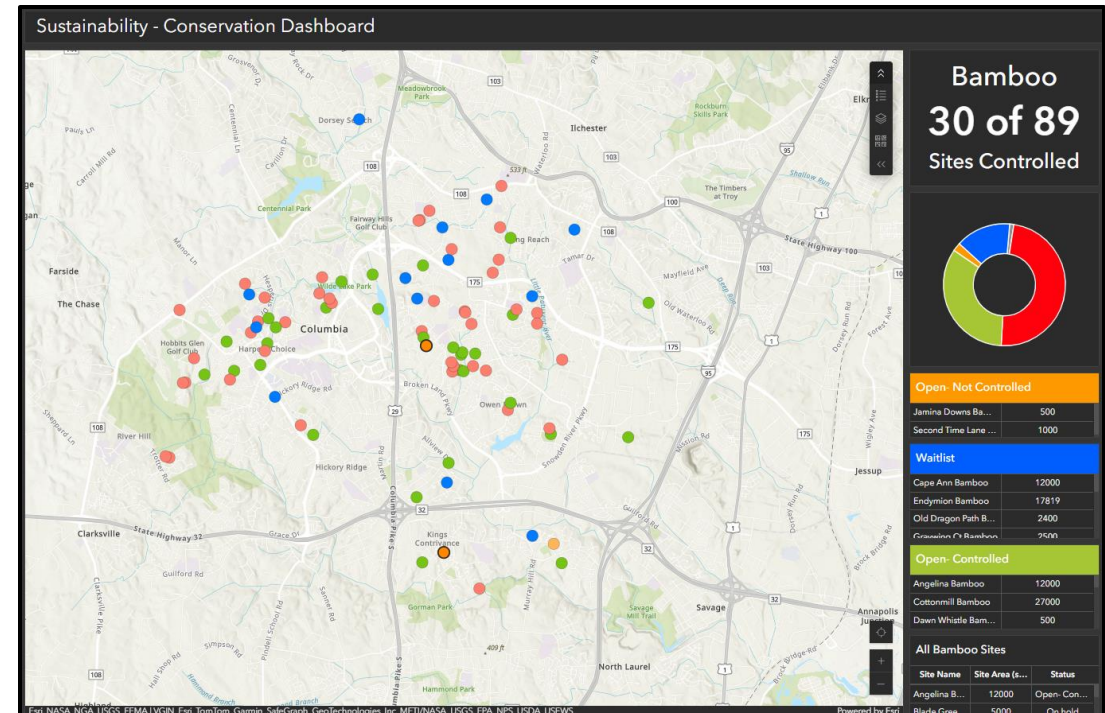
Agenda

- Bamboo Overview
- Cape Ann Drive Bamboo Infestation
- Cape Ann Drive Bamboo Control Plan
- Examples of past projects

Bamboo

Bamboo Management Program

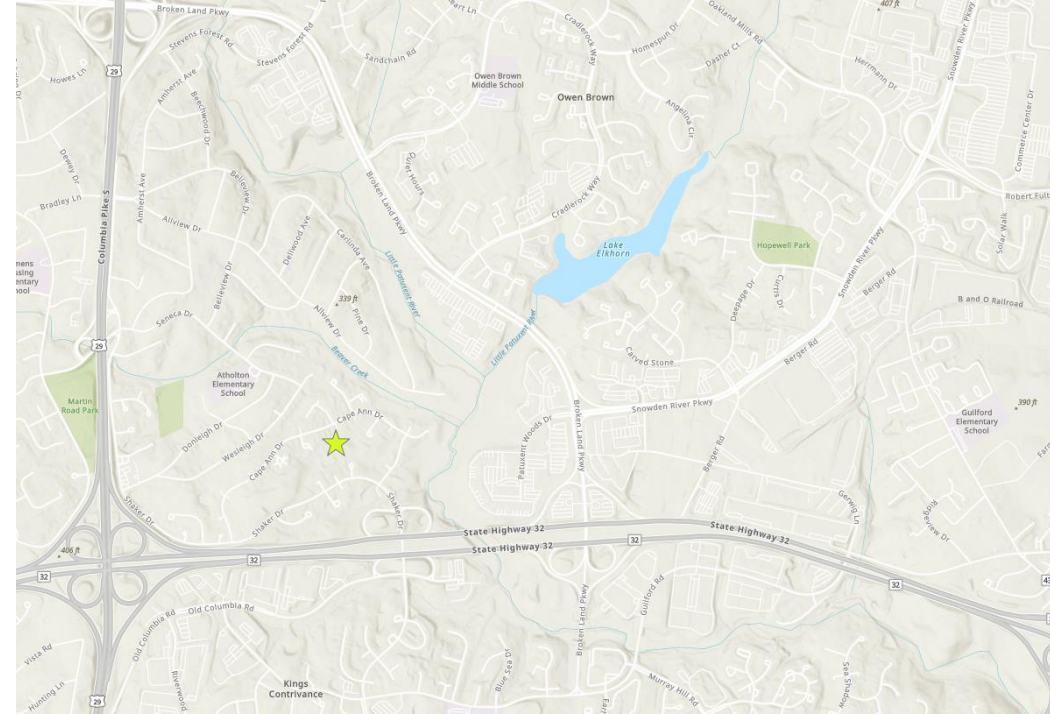
- CA has a Bamboo Dashboard
 - 30 sites under active management/control
 - 89 mapped infestations in Columbia
 - Over 10 total acres infested
 - 9 Sites in Kings Contrivance
- Bamboo spreads via rhizomes
- Introduced throughout Open Space
- Still being sold
- 5-10 year management commitment



Cape Ann Dr. Bamboo Infestation

Golden bamboo (*Phyllostachys aurea*)

- Running-type; highly invasive
- Threatening bridge
- Damaging pathway
- Still expanding

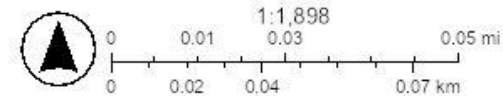


Cape Ann Bamboo Infestation



6/7/2024

✕✕✕✕ Bamboo Infestation — Pathway
□ Property Boundary



Esri Community Maps Contributors, VGIN, © OpenStreetMap, Microsoft, Esri, TomTom, Garmin, SafeGraph, GeoTechnologies, Inc, MET/NASA, USGS.

Eric J. Walker
Columbia Association

Cape Ann Dr. Bamboo Management Plan

August 25th

- Flag and save key trees
 - Black Cherry
 - Blackhaw Viburnum
 - Oak
- Forestry grinder clears site
- 1 or 2 days, 8 am-4 pm
- Cut-Surface along creek and around trees



Cape Ann Dr. Bamboo Management Plan

September 7th

- Forestry tiller/disc
- Breaks up rhizomes
- Decreases resprouting



Cape Ann Dr. Bamboo Management Plan

Late September

- Excavate planting areas
 - 20'x10' rectangles
 - Allows immediate re-planting of a few trees in clusters
 - Increased maintenance
 - Screen trees
- Large-scale excavation limited by permit/cost



Cape Ann Dr. Bamboo Management Plan

October-November

- Plant 20-30 trees as screening

Next 5-10 years

- April-November, visit site monthly
- Spray regrowth
- Continue to replant

Past Project Examples

Cottonmill Court

2021-2024

None seen 2025



Past Project Examples

Sunny Spring

March 2024-present



Cape Ann Dr. Bamboo Infestation

Questions?

Eric Walker – Project Manager

**Sustainability@ColumbiaAssociation.org for more
information**

[Cape Ann Bamboo Control Site Plan](#)